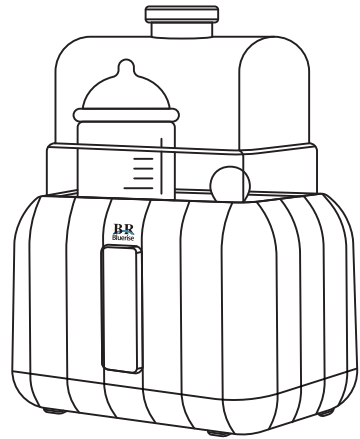


BR Bluerise Bottle Warmer



BLUERISE INTERNATIONAL LLC

Notes for safe use

⚠ Danger:

1. During work, do not touch the base, do not open the lid or move the product.
2. Do not let children play with the plastic bags to avoid suffocation.
3. Do not place the product in a location or place where infants can reach.

⚠ Warning:

1. Do not immerse the power cord or plug into water or any other liquid.
2. The product will produce high temperature steam during work. Do not touch or close to the high temperature parts such as lid to prevent being scalded.
3. Do not let the product dry burning, please turn off the power to avoid problem or fire which will cause injury accident and property loss.
4. Don't use the microwave oven and other heating equipment to heat the product.
5. If the power cord is damaged or other faults occur, it must be replaced by the manufacturer, after sale departments to avoid danger.
6. Food should not be heated for too long.
7. Before heating and feeding, drop the milk on the back of the hand, and the temperature should not exceed the normal value.

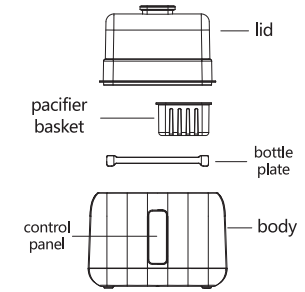
⚠ Attention:

1. This product is not intended to be used by children or people with physical, sensory or mental ability defects. Unless they are supervised and guided by someone responsible for their safety in relation to the use of the product. Children should be taken care of to ensure that they do not treat the product as toys.
2. Before connecting to the power, please be sure to check whether the standard voltage of the product matches the power supply voltage to avoid damage.
3. The power plug of the product must be plugged into a ground socket, and ensure that it is firmly inserted. In order to prevent the poor touch of the overheating and burning of the components, causing short circuit or fire and other hazards.
4. Do not allow the power cord and plug to contact the high temperature surface

- and sharp corners. If the plug, power cord or the product itself are damaged, do not use this product.
5. Before cleaning, please disconnect the power supply and wait to cool it before operating.
6. No heated carbonated drinks.
7. This product meets the national safety standards. If the residual material odor is normal, please clean the product in the correct cleaning method before the first use, so as to effectively reduce or eliminate the residual odor.
8. If you don't use product, please unplug the power supply, clean and dry for storage.
9. Please arrange the power cord in a reasonable position to avoid the danger of tripping.
10. Do not put this product close to high temperature, strong magnetic, flammable and explosive gas gamma natural gas, biogas, etc.), in order to prevent device damage, failure or fire.
11. Do not let the product work unattended to prevent fire hazards.
12. Do not plug or clean the socket with wet hand, otherwise it will cause the danger of electric shock.
13. Do not use this product in the inclined or unstable table, and stay away from the heat source, so as to avoid boiling water splash, electric shock, fire, slide and other injury accidents and property losses.
14. Do not heat the closed container as a risk of explosion.
15. If the product is faulty or damaged, please stop using, contact the after-sales service for consultation, do not repair by yourself.
16. In order to prevent electric shock, short circuit and other damage accidents, when clean this product, please unplug, and dry the bottom and base before use. Do not immerse in water for cleaning.
17. This product is for home use only, the company will not be liable for any commercial use, improper use or failure to follow this instruction, such fault is not covered by the warranty.

Spare parts and function

name	function
lid	use to cover
pacifier basket	storage pacifier
bottle plate	use to put pacifiers
body	retain water and heating part
control panel	to switch on/off product and control function



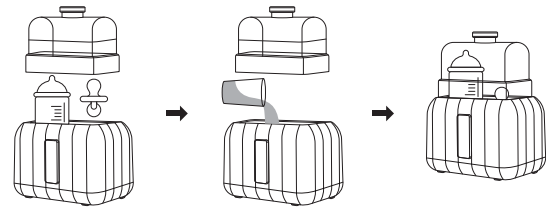
Product specification

product name	liquid heater (milk warmer)
Model No	HJ-B03
Rated voltage	110V-120V
rated frequency	50Hz
rated voltage	200W
standard	GB4706.1-2005; GB4706.19-2008
recommend using environment	please use indoors, suggest room temperature, suggest humidity

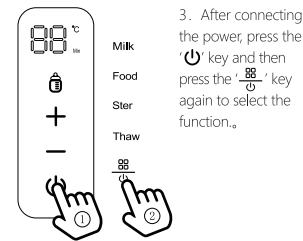
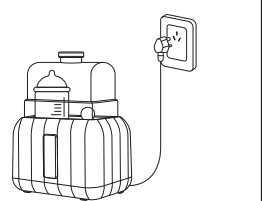
How to use

Steps of usage

1. Put the breast milk/baby food /brewed milk powder what needs to be heated, thawed or disinfected. Then add suitable water into the milk heater and cover the lid.

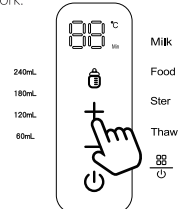


2. Cover on lid, then connect with power.

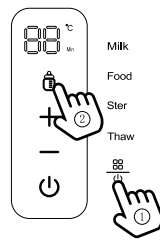


3. After connecting the power, press the power key and then press the '00' key again to select the function.

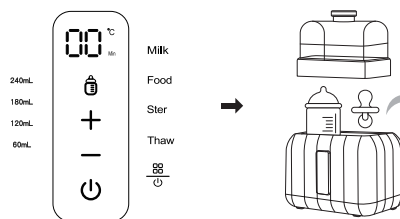
4. After selecting the function, press '+' key to set the temperature (sterilize cannot be adjusted). For the specific adjustable range, see the description of each function program. The corresponding indicator light is on and the product starts to work.



5. If you choose the 'milk' function, you can press the '0' to select (60ml / 120ml / 180ml / 240ml) four gear capacity.



6. The corresponding function reaches the temperature into the countdown. When the countdown is completed, open the lid, take out milk bottle.



Function explain

Milk: press the function key to select warm milk, default 40°C, adjustable range [37-55°C]. After reaching the set temperature, the corresponding countdown start. After the countdown, the warmer keep in constant temperature for 72 hours, and after 72 hours, warmer will be in standby state.

Food: press the function button to select warm food, default 70°C, adjustable range [56-85°C]. After reaching the set temperature, enter the countdown for 40 minutes, and after the function enter the standby state.

Sterilize: press the function key to select sterilize, the default temperature is 100°C, and the temperature is not adjustable. After reaching the default temperature, enter the 15-minute countdown, after countdown enter the standby state.

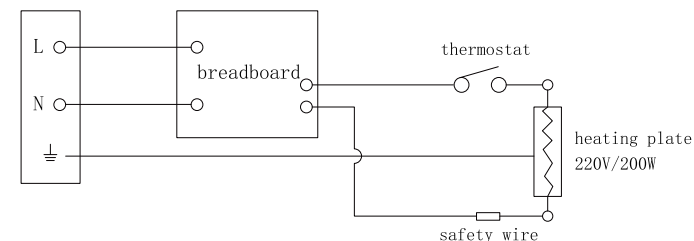
Thaw: Press the 'Thaw' function button, default 38°C, adjustable range [37-44]. After reaching the set temperature, product will enter the countdown, after completing the countdown, constant temperature function will continue in 72 hours, after 72 hours enter the standby state.

How to add water: water can not less than half of the milk volume in the bottle; water should not exceed the bottle plate during sterilization.

Memory function: it has the function of automatically remembering the set temperature last time, it will return default set temperature when it is power off or unplug.

Note: The boiling point may be below or exceed 100°C due to differences of atmospheric pressure.

Electrical schematic diagram



Clean and maintenance

1. How to clean the product

- Unplug and cool the body before each cleaning.
- Do not let the cable, power plug and body into water.
- Ensure that the electrical wiring is dry.
- Avoid sharp objects from touching the surface and the hot sheet.
- Do not use scrub powder, cleaning paste and other products to clean.

2. How to remove scale

Due to the different water quality, the surface of the heating plate will produce scale during the product use, which is a normal phenomenon. It can be soaked in white vinegar or citric acid with water to remove scale and clean.

Failure analysis and trouble solve

Failure performance	analysis of causes	Method
Plugged in the power supply, does not work	Power cord is not plugged correctly	Try again
The button doesn't touch well	Damage in cable	Contact with after service
The display shows 100°C, but the boiling was not obvious	Differences of atmosphere	Temperature sensor has accurate temperature sense, water has been boiled, it can be assured to use
Panel shows E1	Short-circuit of the temperature sensor	Contact with after service
Panel shows E3	Anti-dry protect system	Add cool water, turn on the product after few minutes.

DISTRIBUTED BY:
BLUERISE INTERNATIONAL LLC
For customer support,
E-mail: blueriseinternational@gmail.com